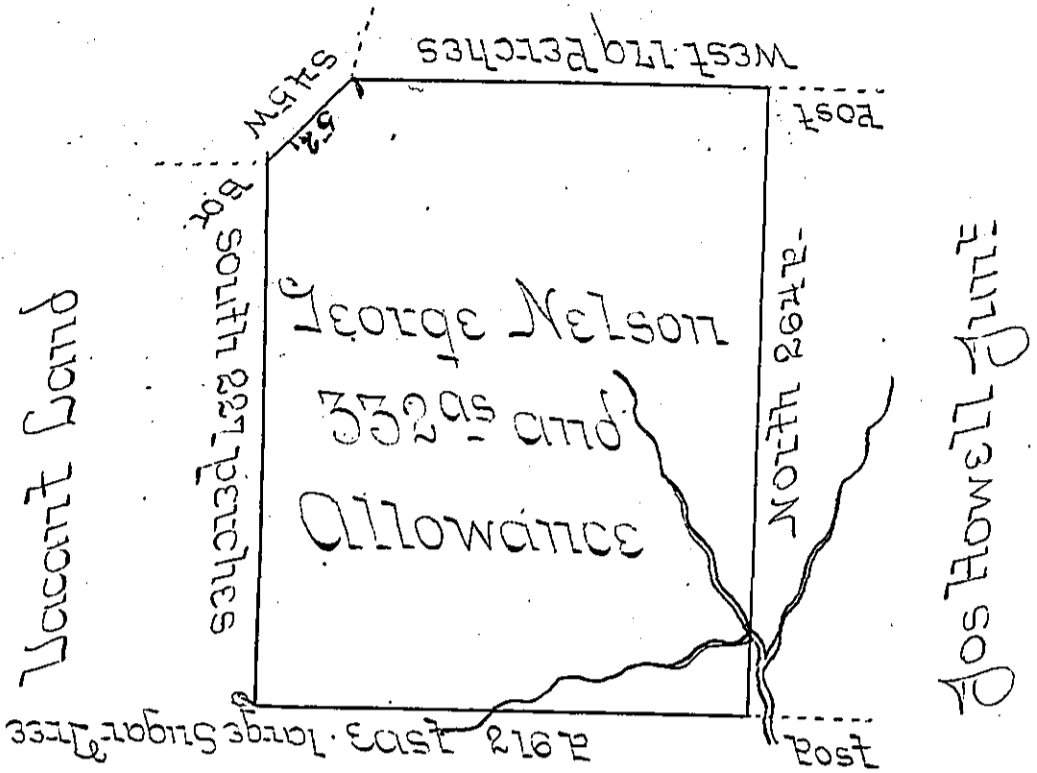


Hugh Howell
Jacob S. Howell



Hilly Vacant Land

A Draught of a Tract of Land called Sugar Tree Ground (being part of a larger Tract of the same name) situate on the waters of Conemough—about a Mile & an half west from William Holdays Improvements and about two Miles S.W. from the SW. corner of the Proprietarys Survey at the Chest adjoining Lands of Hugh Howell Jacob S. Howell & Joseph Howell Junr in the County of Bedford containing three hundred & thirty two Acres and the usual Allowance of Six Percent for Roads &c. Surveyed the 22^d & 23^d Day of June 1773 for George Nelson in pursuance of a Warrant granted to him the 13th Day of May in the same year by

John Lukens Esq^r }
 Surveyor General of } Thomas Smith U.S.
 Pennsylvania &c }

IN TESTIMONY that the above is a copy of the original remaining on file in the Department of Internal Affairs of Pennsylvania, made conformably to an Act of Assembly approved the 16th day of February, 1833, I have hereunto set my Hand and caused the Seal of said Department to be affixed at Harrisburg, this sixth day of March 1906.

Loac B Brown
 Secretary of Internal Affairs.